

# Standardized quantitative metabolomics with biocrates' MxP<sup>®</sup> Quant 500 XL kit on SCIEX Triple Quad<sup>™</sup> 7500 LC-MS/MS System

Stephen Dearth, Gregor Ömer, Markus Langsdorf, Tuan Hai Pham;  
biocrates life sciences ag, Innsbruck, Austria

Nadia Ashrafi, Stewart Graham;  
Metabolomic Research Group, Corewell Health, Royale Oak, MI, USA

## 1 Introduction

Standardized protocols and methods capable of generating reproducible results are essential for producing high quality scientific findings. For the past decade, biocrates kit technology has been the gold standard in quantitative metabolomics, equipping researchers with standardized and validated methods for the study of human health and disease. International ring trials have proven the quality and reproducibility of biocrates kit data<sup>1</sup>, allowing researchers to conduct local sample measurements and contribute to the global scientific community with confidence.

MxP Quant 500 XL is a ready-to-use and quality-controlled kit for quantitative metabolic profiling. It targets 1,019 metabolites across 39 biochemical classes of lipids and small molecules (Figure 1) related to healthy aging, neurodegeneration, and cardiometabolic diseases. The WebIDQ workflow manager is a companion cloud software that guides users through the entire workflow and is easily accessible through a web browser. It combines machine learning-based peak picking, automated quantification, and visual validation features to standardize and increase confidence in acquired data. The integrated MetaboINDICATOR tool automatically calculates 474 predefined sums and ratios for advanced biological interpretation of enzyme activities and pathophysiological conditions resulting in a total of up to 1,493 metabolic features.

The kit performance was previously demonstrated across mass spectrometry platforms and laboratories from around the world through an international ring trial<sup>2</sup>. The methods were adapted to the latest SCIEX 7500 triple quadrupole mass spectrometer and optimized with modifications and updates where required. The methods were tested using replicates of different sample types to determine the detectability and to verify reproducibility and comparability to the other instruments. The performance results are presented in this application note.

## 2 Materials and method

The kit consists of two patented 96-well filter plates with internal standards already integrated, system suitability test samples, lyophilized calibration standards, and plasma-based quality controls (QCs), which were reconstituted according to protocol. Experimental samples, consisting of 11 human plasma samples (5 female, 6 male, age 17-65, absence of medical diagnosis), NIST SRM 1950, three NIST Candidate Reference Materials 8231 (pooled plasma from diabetic, high triglyceride, and young African American plasma samples), and three pooled fecal samples at different concentration levels from 30 human subjects, were registered in WebIDQ and arranged together with the calibration and plasma-based QC samples on a 96-well plate layout. All samples except the calibration

standards were measured in replicates of three. Three separate kit plates were prepared and measured containing the calibration standards and QC samples to monitor the inter-plate accuracy and reproducibility. The worklist was directly exported to the mass spectrometer software and the layout printed for kit preparation. Fecal samples were prepared according to the biocrates protocol for analyzing feces using a Precellys homogenizer and isopropanol as extraction solvent. The kit was prepared according to the user manual with 10 µL of sample pipetted per well on each of the two kit plates followed by derivatization, extraction, and finally dilution

into three separate measurement plates: one for LC-MS/MS and two for FIA-MS/MS (Quant 500 and XL part). The total run time was 54 hours (80 samples, 2 injections for each of the three measurement plates). Data files were directly processed in WebIDQ with automated quantification, validation, and normalization. Plasma-based QC samples at different concentration levels were used to automatically assess performance, checking both accuracy and reproducibility. The QCs were also used for data normalization as an essential part of the workflow to minimize any deviations caused by preparation or measurement. Quantified data was exported and evaluated in R.

107 small molecules (14 classes)	912 lipids (25 classes)	
<ul style="list-style-type: none"> <li>- Alkaloids (1)</li> <li>- Amine oxides (1)</li> <li>- Amino acids (20)</li> <li>- Amino acid related (30)</li> <li>- Bile acids (14)</li> <li>- Biogenic amines (9)</li> <li>- Carbohydrates and related (1)</li> <li>- Carboxylic acids (7)</li> <li>- Cresols (1)</li> <li>- Fatty acids (12)</li> <li>- Hormones and related (4)</li> <li>- Indoles and derivatives (4)</li> <li>- Nucleobases and related (2)</li> <li>- Vitamins and cofactors (1)</li> </ul>	<ul style="list-style-type: none"> <li>- Acylcarnitines (40)</li> <li>- Phosphatidylcholines (78)</li> <li>- Lysophosphatidylcholines (12)</li> <li>- Sphingomyelins (15)</li> <li>- Cholesteryl esters (22)</li> <li>- Ceramides (29)</li> <li>- Dihydroceramides (8)</li> <li>- Hexosylceramides (19)</li> <li>- Dihexosylceramides (9)</li> <li>- Trihexosylceramides (6)</li> <li>- Diglycerides (44)</li> <li>- Triglycerides (242)</li> </ul>	<ul style="list-style-type: none"> <li>- Phosphatidic acids (41)</li> <li>- Lysophosphatidic acids (8)</li> <li>- Phosphatidylethanolamines (95)</li> <li>- Lysophosphatidylethanolamines (43)</li> <li>- Phosphatidylglycerols (64)</li> <li>- Lysophosphatidylglycerols (10)</li> <li>- Phosphatidylinositols (53)</li> <li>- Lysophosphatidylinositols (16)</li> <li>- Phosphatidylserines (18)</li> <li>- Lysophosphatidylserines (12)</li> <li>- Sphinganine and sphingosines (8)</li> <li>- Sphinganine and sphingosine phosphates (8)</li> <li>- Monoglycerides (12)</li> </ul>

Figure 1: The MxP® Quant 500 XL kit metabolite panel by compound class.

### 3 Results and discussion

Up to 77% of the 1,019 metabolites were found to be above the limit of detection (LOD) in the analyzed human plasma samples, as well as NIST 1950. Lipid detectability showed coverage up to 71% in human feces and up to 75% in human plasma. The precision was within 20% for all measured matrices for most analytes above LOD. Analyte concentrations were found to be comparable with other SCIEX platforms. The automated peak picking feature of WebIDQ simplified peak integration and accelerated metabolite quantification.

#### Detectability

Out of the total panel of 1,019 metabolites and lipids, the detectability from the 11 human plasma samples from different individuals showed a distribution of 60% (609 metabolites) to 77% (780 metabolites). Other sample types such as the high QC level showed a detectability above 800 metabolites (Figure 2). The detectability was defined as the number of metabolites above LOD with coefficient of variation (CV) below 30%.

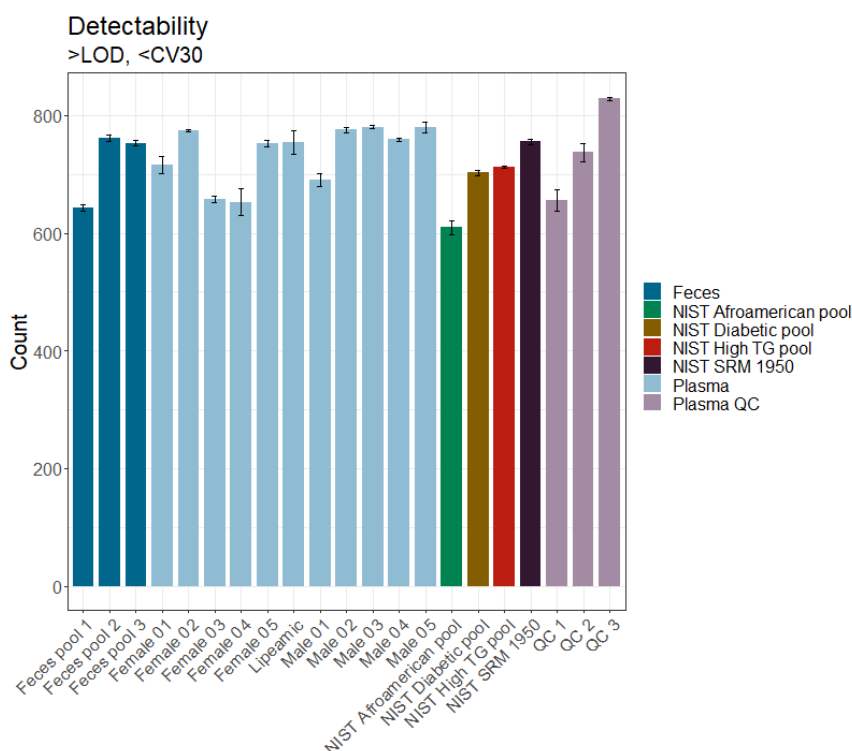


Figure 2: Detectability – Number of metabolites above LOD out of 1,019 and CV<30% for the sample groups analyzed. Each bar represents a different individual sample (n = 3)

### Intra-plate reproducibility

All samples measured in triplicates showed a median CV below 10% for metabolites measured above LOD (Figure 3). Depending on the sample matrix, 91% to 93% of analytes were below 30% CV and 79% to 81% were below 20% CV. Figure 4 shows the plasma-based QC levels, the different feces pools and the NIST SRM 1950 separately, demonstrating exceptional CVs across all types and levels.

### Inter-plate reproducibility

Inter-plate %CVs across three individual kit plates prepared and measured at different time points were comparable to the intra-plate %CVs, demonstrating the robustness of the assay and of the SCIEX 7500 system (Figure 5). The overall CVs of the fecal samples were slightly higher compared to the plasma samples.

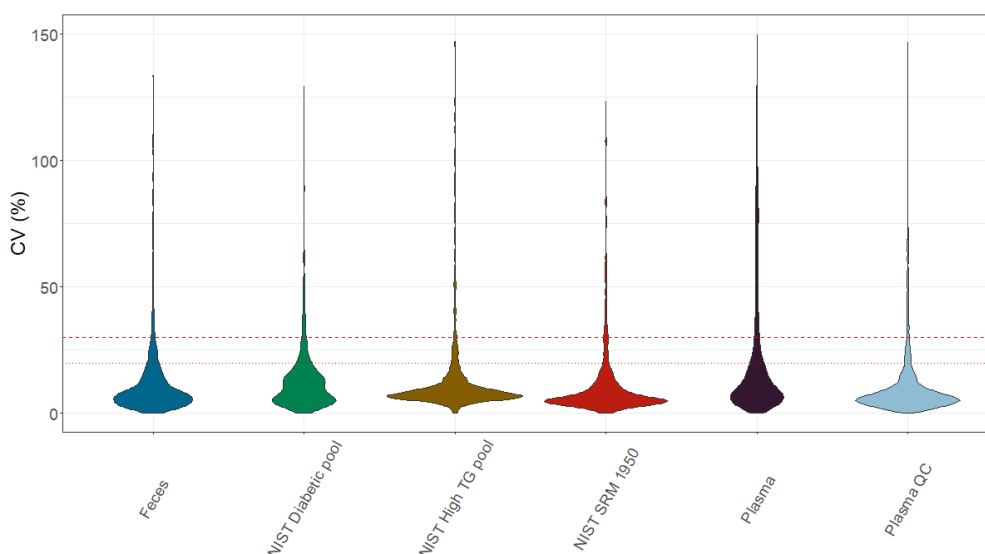


Figure 3: Intra-plate CVs of all samples. Upper red dotted line = 30% CV, lower red dotted line = 20% CV

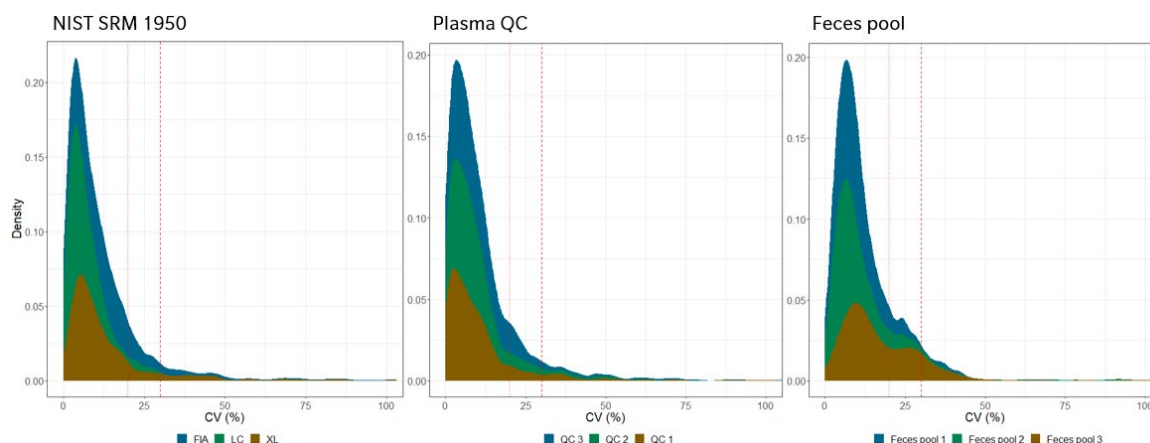


Figure 4: Intra-plate CVs of the, the different feces pools and the NIST SRM 1950, plasma-based QC levels and feces pools. Right red dotted line = 30% CV, left red dotted line = 20% CV

## Accuracy

The accuracies were determined in relation to the reference values defined for each QC level. Most accuracies were within 80-120% across all QC levels of different concentrations. Figure 6 displays the accuracies of amino acids, amino acid-related metabolites and biogenic amines across the three plates from the LC part of the kit.

## Correlation with other platforms

Figure 7 reveals a strong correlation of concentrations with values obtained previously on SCIEX 5500, 5500+, and 6500+ running the same sample set (metabolites above LOD and CV below 30%).

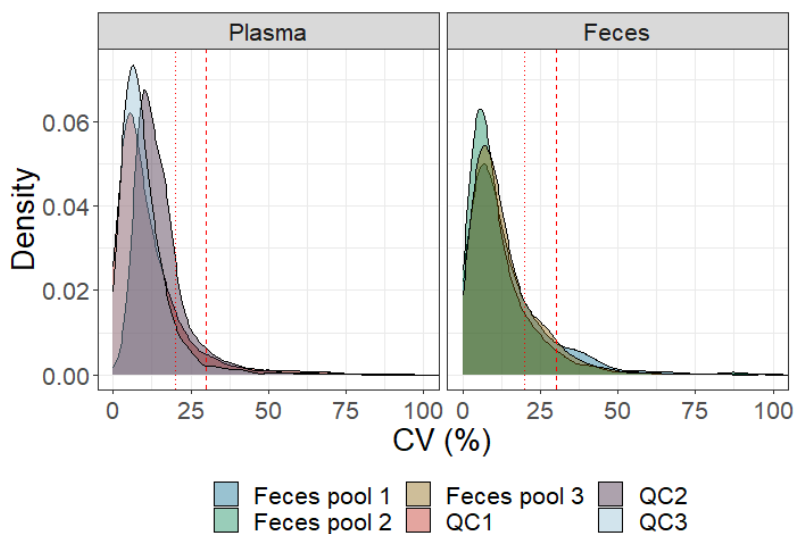


Figure 5: Inter-plate CVs of plasma-based QCs and feces pools. Right red dotted line = 30% CV, left red dotted line = 20% CV

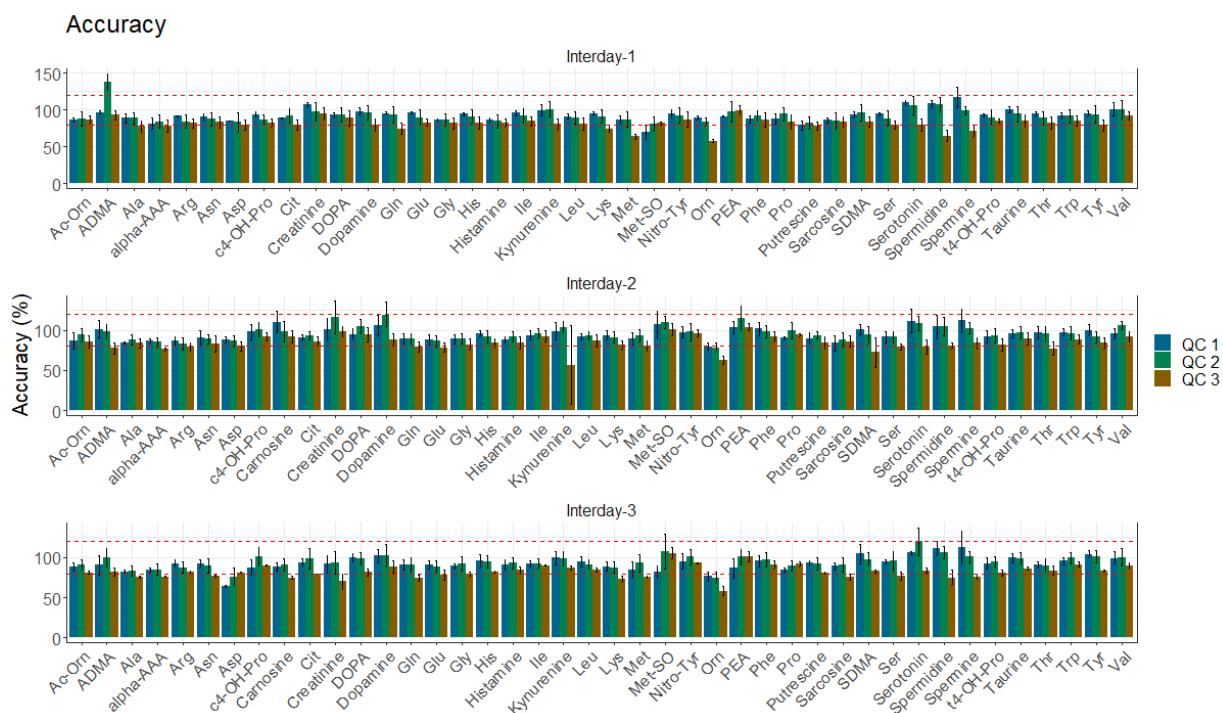


Figure 6: Intra-plate accuracies of amino acids, amino acid-related and biogenic amines in QC levels of different concentrations. Upper red dotted line = 120%, lower red dotted line = 80% accuracy

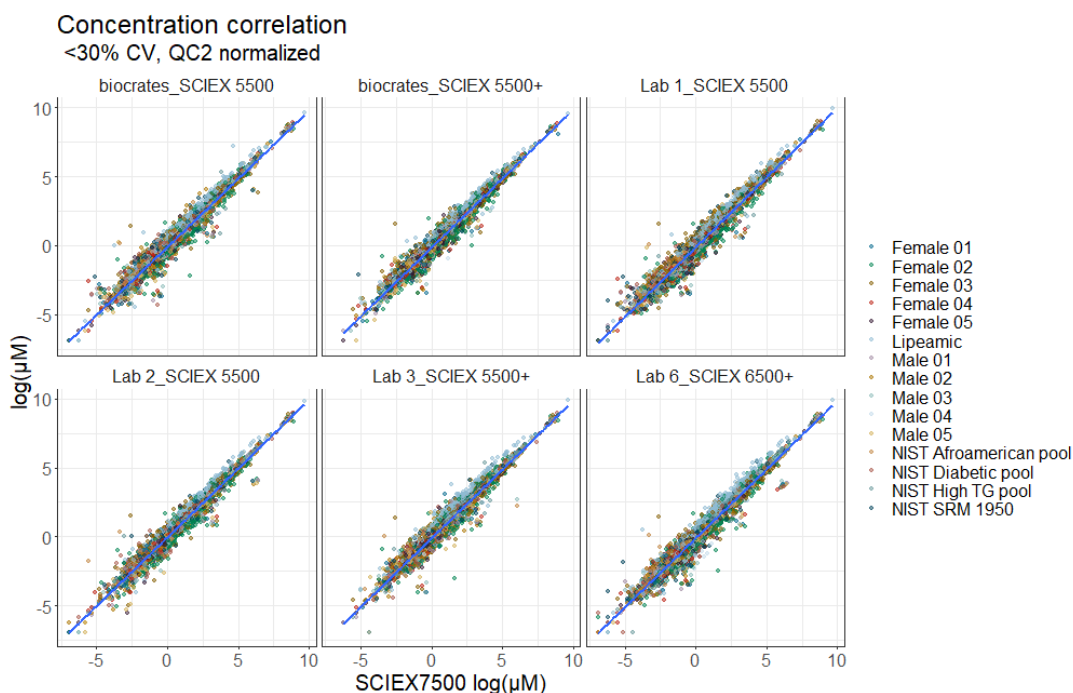


Figure 7: Correlation of sample concentrations obtained on the SCIEX 7500 system compared to concentrations from other SCIEX instruments.

## 4 Conclusions

The results showed very good intra- and inter-plate reproducibility over time and across different sample types, highlighting the robustness of the assay and of the SCIEX 7500 platform. Detectability from 600 to over 800 metabolites above LOD was observed depending on the sample tested. It was demonstrated that the MxP® Quant 500 XL kit in combination with the SCIEX 7500 system shows an outstanding analytical performance with excellent precision and comparability of concentration values to other instruments.

## 5 References

1. Siskos et al. Interlaboratory Reproducibility of a Targeted Metabolomics Platform for Analysis of Human Serum and Plasma. *Anal. Chem.* 2017; 89(1):656–65.
2. biocrates application note, 2023: Standardized quantitative metabolomics using the biocrates MxP® Quant 500 XL kit across mass spectrometer platforms